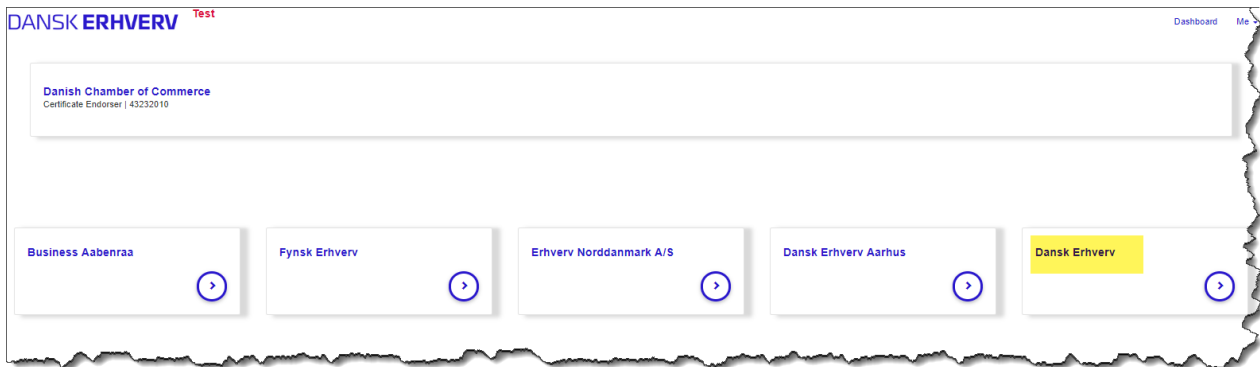


# ATA Carnet – ADD FROM CATALOG

16 January 2019



## DANSK ERHVERV Test

**Danish Chamber of Commerce** *Dansk Erhverv*

CERTIFICATE OF ORIGIN **ATA CARNET** PDF TEMPLATES

**NEW ATA CARNET**

**ATA Carnets**

ID	Carnet number	Created	Item description	Created by	Consignor
Tata01353		2019-01-15 08:24	1 - Flightcase w/ 2 x Digico	Test User 01	Dansk Erhverv
Lata01344	DK/CPH 9926	2019-01-11 16:19	1 - Flightcase w/ 2 x Digico	Pia Lind	Dansk Erhverv

**Danish Chamber of Commerce** *Dansk Erhverv* Certificates Reports Archive

ATA Carnet

ATA Carnet - Lata01355

**A. Applicant**

Consignor address

Company

Street name

Street 2

Post code  City

Country

**B. Represented by (person/company at border crossing)**

Represented by (person/company at border crossing)

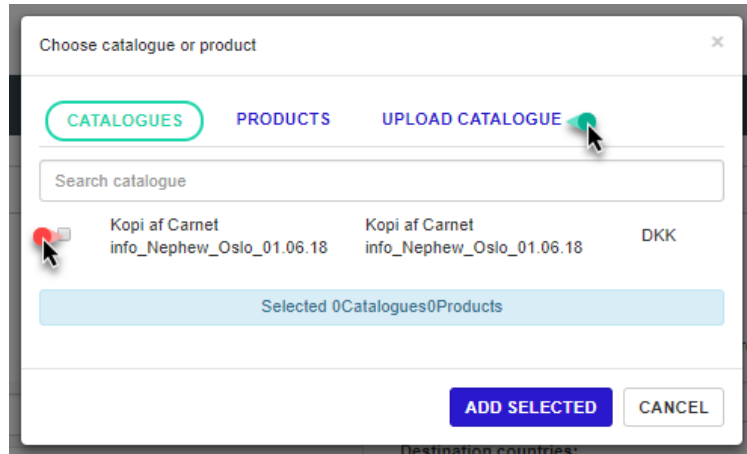
Destination countries:

Transit countries:

**C. Application of Articles**

Select items purpose ...

Upload Catalog and then use catalog  
 Content in the ATA Carnet

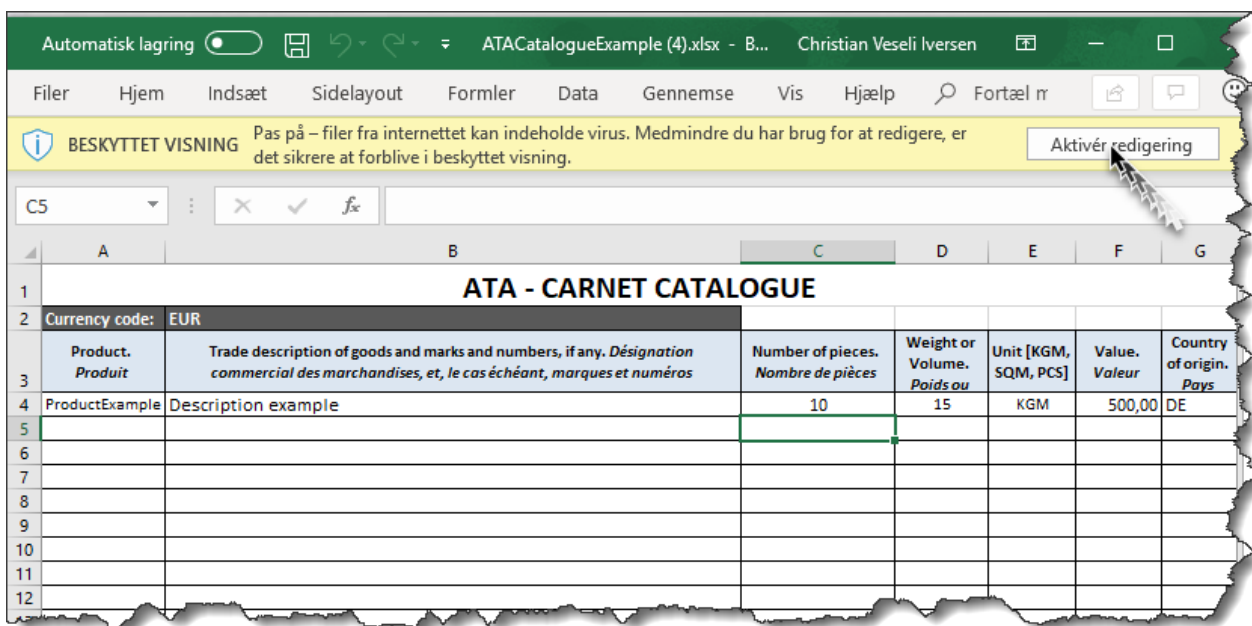
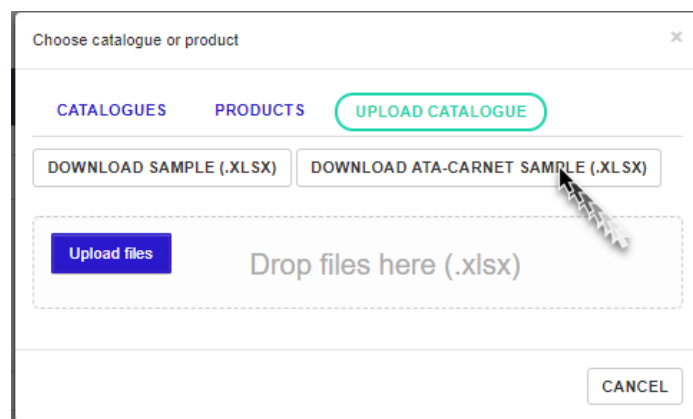


Load the Catalog into ATA Carnet

### Upload Catalog:

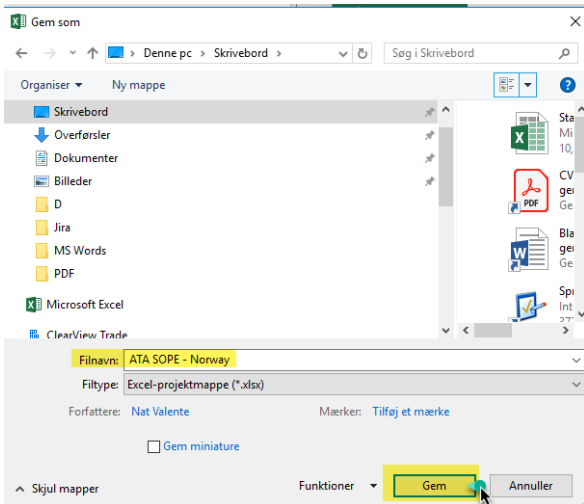
You can download two Catalog samples.

- DOWNLOAD SAMPLE (.XLSN) most used for master data
- DOWNLOAD ATA-CARNET SAMPLE (XLSN) most used for ATA Carnet (catalog is fitting ATA)



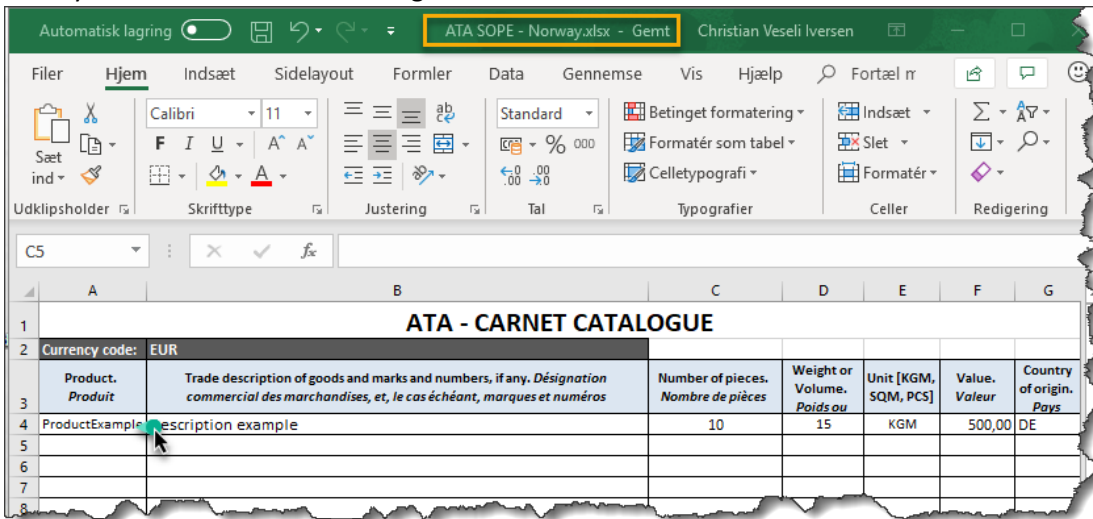
After activating editing....

SAVE the file locally:



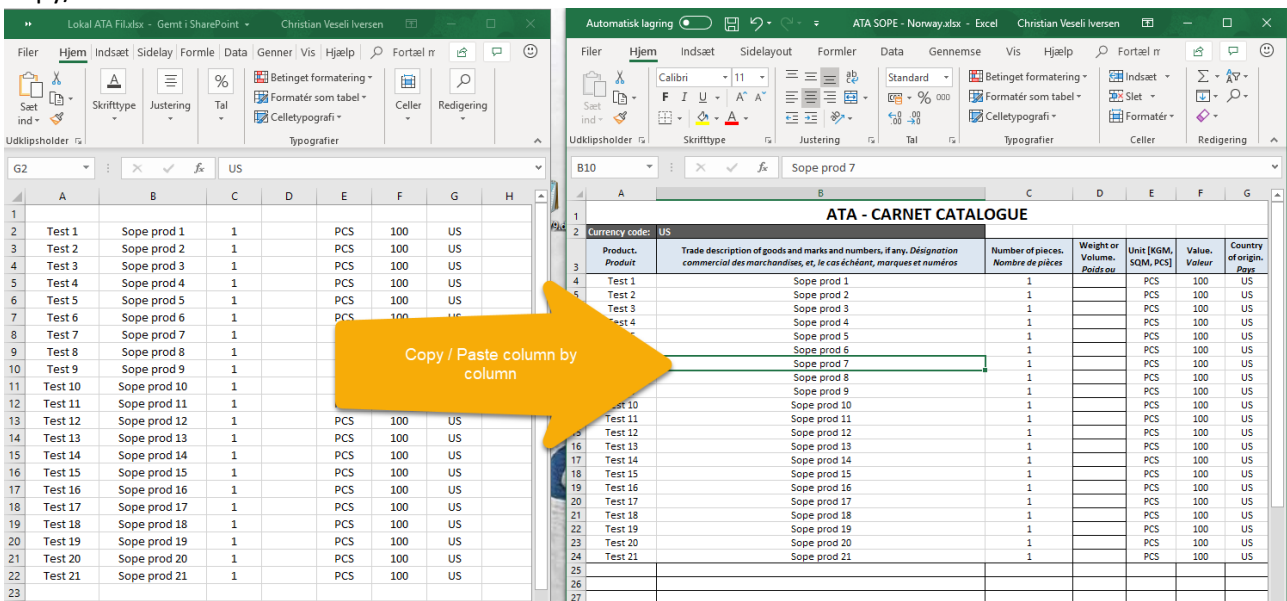
Start by:

B2: If your value is not EUR – change it....



Next you can start type information in A4 or copy/paste from an existing local Excel file...

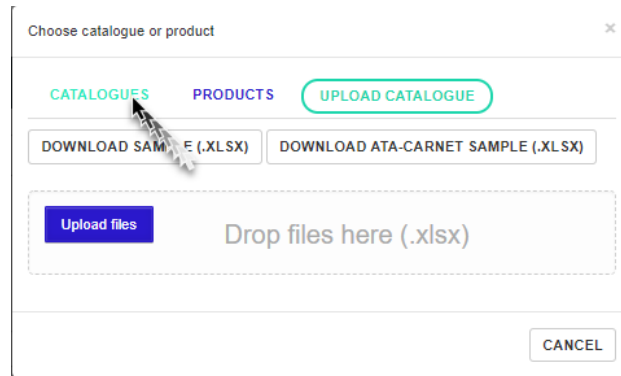
Copy/Paste:



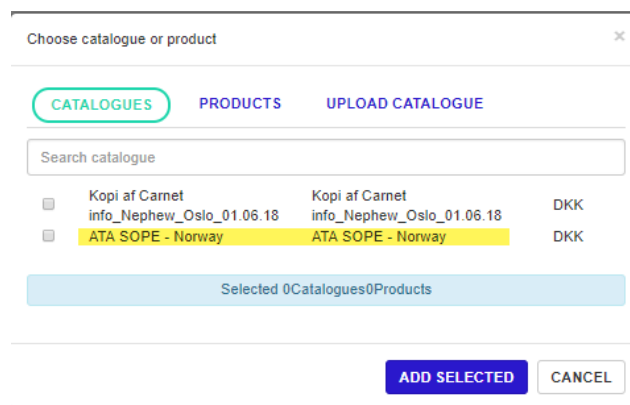
After Copy / Paste remember to save the file...



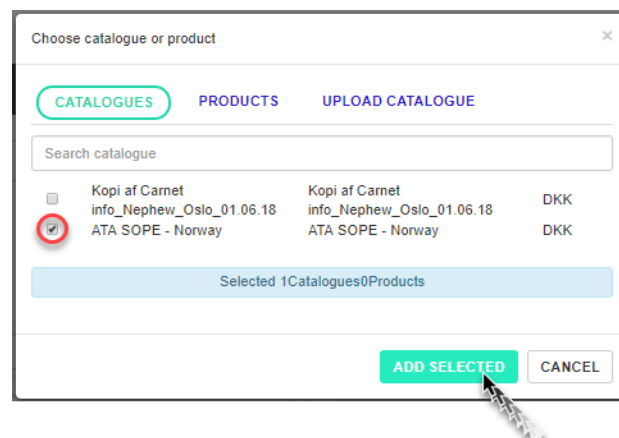
Click on:



And you will see the catalogues “ATA SOPE – Norway” has been add to list:



Set check-mark + ADD selected:



And the ATA form will be updated with the content accordingly:

ATA Carnet

Street name Slotsholmsgade 1 + Add country

Street 2 Street name Transit countries:

Post code 1216 City København K + Add country

Country Select country... ADD ADDRESS UPDATE ADDRESS

C. Application of Articles

Select items purpose ...

#	Item description	Number and kind	Weight or volume	Value	Country of origin
1	Test 1 - Sope prod 1	1 PCS	0	100 DKK	US United States of America
2	Test 2 - Sope prod 2	1 PCS	0	100 DKK	US United States of America
3	Test 3 - Sope prod 3	1 PCS	0	100 DKK	US United States of America
4	Test 4 - Sope prod 4	1 PCS	0	100 DKK	US United States of America
5	Test 5 - Sope prod 5	1 PCS	0	100 DKK	US United States of America
6	Test 6 - Sope prod 6	1 PCS	0	100 DKK	US United States of America
7	Test 7 - Sope prod 7	1 PCS	0	100 DKK	US United States of America
8	Test 8 - Sope prod 8	1 PCS	0	100 DKK	US United States of America

From here you can:

- Overwrite / change content in every field if needed
- Add individual item lines
- Delete item lines

You can also change value on all item lines:

19	Test 19 - Sope prod 19	22	1	PCS	0	PCS	100	DKK	US
20	Test 20 - Sope prod 20	22	1	PCS	0	PCS	100	DKK	US
21	Test 21 - Sope prod 21	22	1	PCS	0	PCS	100	DKK	US
TOTAL or CARRIED OVER		21			0.00		2100	DKK	

ADD GOODS ITEM
ADD FROM CATALOGUE

DKK  
 DKK  
EUR  
 USD  
 NOK